

C-MAP Update Service

Commercial Navigation

A secure, reliable, cost effective and user-friendly updating service for professional navigators.

The C-MAP Update Service makes the latest updated weather and navigational data available wherever you are. For subscribers with access to adequate communications channels, new chart updates are made available on the C-MAP update server every working day. Weather forecast updates are even made available several times a day. In addition to NtM's, chart updates can now also include new charts and new editions of existing charts.



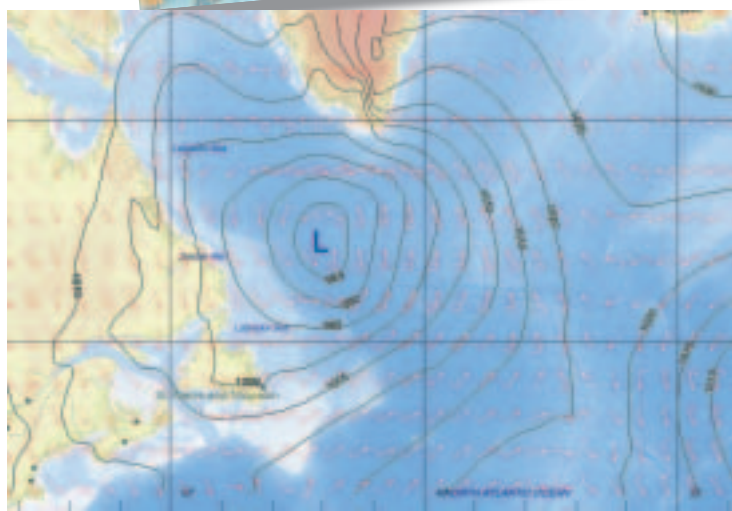
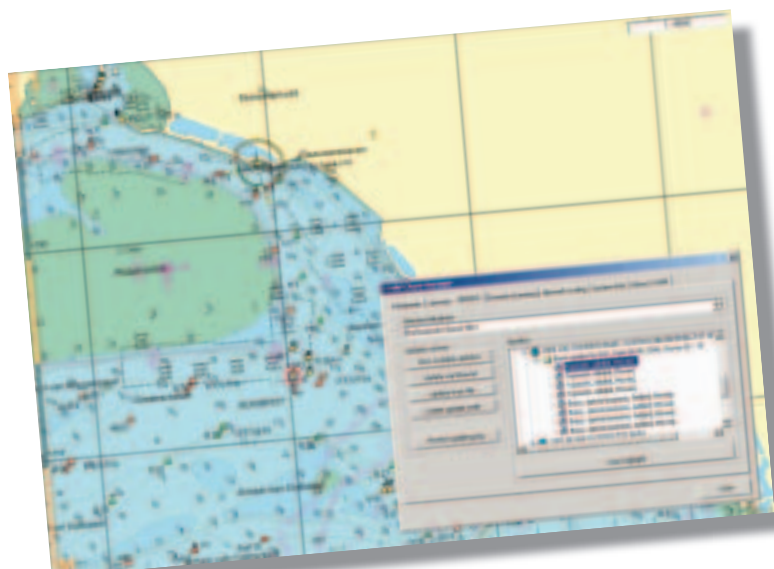
- :: Easy updating
- :: Always up-to-date
- :: Including new charts and new edition of charts
- :: Weather Updates
- :: Supports HTTP (Internet) and e-mail
- :: Data compressed to minimum size for online transfer
- :: Cost effective, reduced airtime

JEPPESEN.
MARINE

jeppesen.com

Jeppesen is a Boeing Company

C-MAP Update Service



The C-MAP Update Service provides the latest updated weather and navigational data available wherever you are

SUPPORTING APPLICATIONS

The CM-93/3 format is supported by the majority of ECS (Electronic Chart Systems) and ECDIS (Electronic Chart Display and Information Systems) For an overview of compatible systems see: <http://www.c-map.no/ecdis.asp>

FORMAT

The data is distributed in CM-93/3 format, which is S-57/3 compliant.

PROJECTION

The C-MAP World data is projection-free and can be displayed using the projection that is more convenient for the specific application or navigational area.

LANGUAGES AND ALPHABETS

All textual information relevant to safety of navigation is always encoded in English in addition to the original language. In general when any national language is used in the database the corresponding English translation will also be available.

Product/Service	CD/DVD	Online	Online+
CM-93/2	3 CDs		
C-MAP Professional	1 CD	X	X
C-MAP Professional+	1 DVD	X	X
C-MAP ENC	1 DVD	X	X

C-MAP CHART SERVICE

Depending on the customer's need, technical outfit and communication capacity, the chart service subscriber can choose between three different options to keep the onboard database updated

C-MAP Update Service CD/DVD

Updates can be distributed via CD-ROM (CM-93/2 and Professional) or DVD (Professional+ and ENC). This option includes all updates issued by in NtM booklets, new charts and new editions of charts. The CD-ROM or DVD can be received every month or 3 times a year, depending on the customer's need.

C-MAP Update Service Online

To keep the products more frequently updated, the NtM updates can be distributed via online communication. This service does not include new charts and new edition of charts. Thus, to get access to new charts, it is recommended to receive complete updates on CD-ROM or DVD on a regular basis. This service does not support the CM-93/2 product.

C-MAP Update Service Online+

To be able to update the database wherever and whenever, Online+ is the best option. The service includes NtMs as well as new charts and provides accordingly for complete updating. The service requires bandwidth of high quality and size. This service supports C-MAP Professional, C-MAP Professional+ and C-MAP ENC.

C-MAP WEATHER SERVICE

As a part of the C-MAP Weather Service you can have an integrated solution suggesting a safe route based upon the information from C-MAP electronic charts. Easy downloading and browsing of Weather Forecast data, a true One Click Download makes the service efficient and by keeping the charts and latest weather and sea conditions up-to-date, you are truly well prepared and seaworthy.

PRODUCT SUPPORT

For product support, please contact: support@c-map.no

For prices, terms and conditions: info@c-map.no

FOR MORE INFORMATION

Jeppesen Norway AS
P.O.Box 212
N-4379 EGRSUND
Norway
Telephone: + 47 51 46 47 00
Telefax: + 47 51 46 47 01
info@c-map.no
www.jeppesen.com/marine